



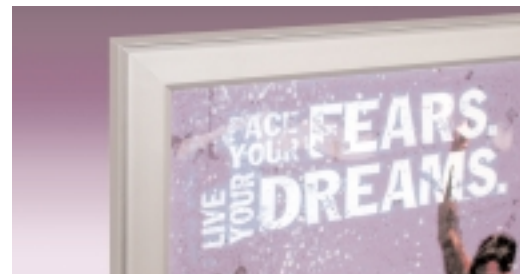
LUMINAIRE ULTRA® III

ADDS A NEW DIMENSION TO VISUAL MERCHANDISING!



ITS ULTRA-SLIM PROFILE AND SUPERB ILLUMINATION QUALITIES PROVIDE YOUR GRAPHIC COMMUNICATIONS WITH EXCEPTIONAL VISUAL IMPACT.

- Narrow profile of just 1⁵/₈" (41mm).
- Frame flips open on all four sides for easy graphic and service access.
- Cold-cathode fluorescent lamps (CCFL) have a life expectancy of up to 40,000 hours—double that of conventional fluorescents—up to 9 years without lamp changes in a typical retail application!
- Light distribution is extraordinarily even, through an innovative method of edgelighting an internal, precision-etched acrylic panel.
- Energy efficient and cool operating—power consumption and heat generation are reduced up to 80% when compared to displays with conventional fluorescent lamps and ballasts.
- All-aluminum structure.
- Wide variety of colors and finishes available.
- Eight standard sizes from 11" x 14" (279 x 356mm) to 43" x 62" (1092 x 1575mm).
- Custom sizes available, as large as 48" x 105" (1200 x 2670mm).



Clearr Corporation, *Display Division* • 6325 Sandburg Road • Minneapolis, MN 55427, USA
763/398-5400 • Fax: 763/398-0134 • info@clearrcorp.com • www.clearrcorp.com

call toll-free
800/LITEBOX
800/548-3269

LUMINAIRE ULTRA® III
Ultra-Thin Backlit
Graphic Displays

LUMINAIRE ULTRA III

Ultra-Thin Backlit Graphic Displays

Specifications

Input Voltage	100-240volts, 50-60hertz
Plastic Sheets	.3125" (8mm) illuminated acrylic panel built into fixture; .015" (0,38mm) removable clear polycarbonate cover sheet
Standard Finish	Satin-anodized aluminum

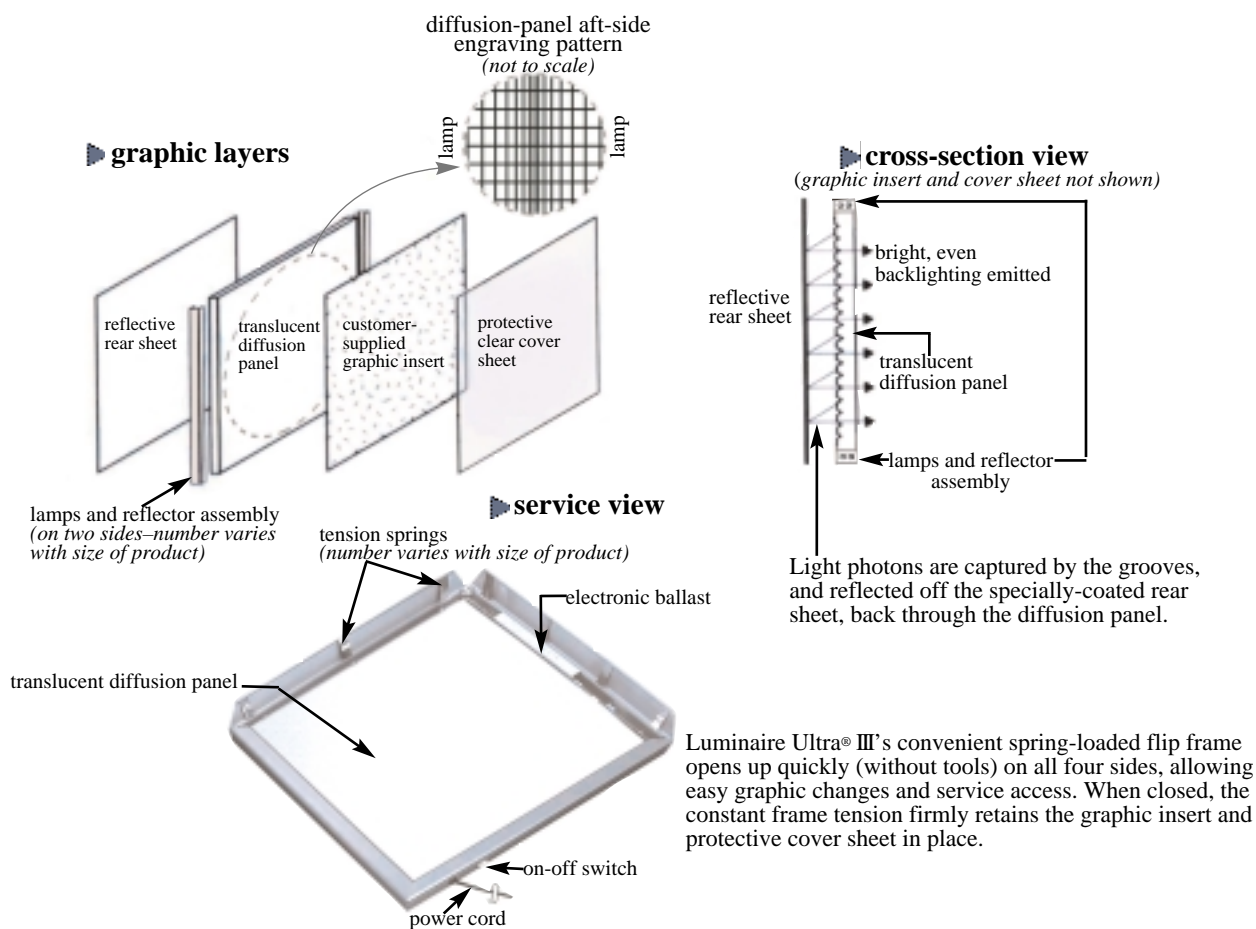
The Luminaire Ultra® III Illumination System

The Luminaire Ultra® III employs an innovative system of light distribution, which provides multiple benefits.

An internal acrylic diffusion panel is edgemit by two or more cold-cathode tandem lamp assemblies, with each lamp being just 1/10" (2,6mm) in diameter, located on opposite sides of the panel. The panel is engraved with a series of V-shaped grooves, running in both panel dimensions. The groove spacing parallel to the lamps becomes more dense as the distance from the lamps increases.

The grooves capture and reflect the light from the lamps off of a reflective rear sheet and back through the translucent panel, producing illumination to the graphic that is true in color (does not alter graphic colors), with remarkably even light distribution. There are no shadows or hot spots, (which are inherent in conventionally backlit products), as the variation of the groove spacing serves to provide the panel with virtually-perfect light distribution.

High energy efficiency and cool operation are welcome by-products of this dynamic system.



Luminaire Ultra® III's convenient spring-loaded flip frame opens up quickly (without tools) on all four sides, allowing easy graphic changes and service access. When closed, the constant frame tension firmly retains the graphic insert and protective cover sheet in place.

Graphic Dimensions		Visual Area Dimensions		Outside Frame Dimensions		Lighting (CCFL Lamps)	
inches	mm	inches	mm	inches	mm	inches	mm
11 x 14	279 x 356	10 ⁹ / ₁₆ x 13 ¹¹ / ₁₆	268 x 347	13 ³ / ₄ x 16 ¹³ / ₁₆ x 1 ⁵ / ₈	349 x 427 x 41	2-14 ⁵ / ₁₆	2-363
16 x 20	406 x 508	15 ¹ / ₂ x 19 ⁹ / ₁₆	395 x 497	20 ⁹ / ₁₆ x 22 ¹¹ / ₁₆ x 1 ⁵ / ₈	522 x 577 x 41	2-18 ¹ / ₁₆	2-458
20 x 24	508 x 610	19 ⁹ / ₁₆ x 23 ³ / ₈	497 x 594	22 ¹¹ / ₁₆ x 26 ⁹ / ₁₆ x 1 ⁵ / ₈	577 x 674 x 41	2-23 ¹⁵ / ₁₆	2-608
24 x 30	610 x 762	23 ³ / ₈ x 29 ⁹ / ₁₆	594 x 751	26 ⁹ / ₁₆ x 32 ¹¹ / ₁₆ x 1 ⁵ / ₈	674 x 831 x 41	2-29 ¹³ / ₁₆	2-758
24 x 36	610 x 914	23 ³ / ₈ x 35 ⁹ / ₁₆	594 x 903	26 ⁹ / ₁₆ x 36 ¹⁵ / ₁₆ x 1 ⁵ / ₈	674 x 938 x 41	2-23 ¹⁵ / ₁₆	2-608
30 x 40	762 x 1016	29 ³ / ₈ x 39 ⁹ / ₁₆	746 x 1005	32 ¹ / ₂ x 42 ¹¹ / ₁₆ x 1 ⁵ / ₈	826 x 1085 x 41	2-29 ¹³ / ₁₆	2-758
36 x 48	914 x 1219	35 ⁹ / ₁₆ x 47 ⁷ / ₈	904 x 1197	40 ¹ / ₁₆ x 51 ⁹ / ₁₆ x 1 ⁵ / ₈	1017 x 1310 x 41	4-23 ¹³ / ₁₆	4-608
43 x 62	1092 x 1575	42 ⁵ / ₈ x 61 ¹ / ₈	1082 x 1553	47 ¹ / ₁₆ x 65 ⁹ / ₁₆ x 1 ⁵ / ₈	1195 x 1666 x 41	4-29 ¹³ / ₁₆	4-758